

# RELAY

## 超小型功率电磁继电器 / Subminiature Power Relay

### CTPR6系列 CTPR6 SERIES

- 特性 Features
  - 尺寸 : (20.0x5.0x12.5mm)  
Dimension: (20.0x5.0x12.5mm)
  - 切换能力达5A~7A  
Ability to switch up to 5A~7A
  - 高灵敏度，功耗仅为 0.12W  
High sensitivity and power consumption is only 0.12W
  - 超薄、超小型 (宽仅 5mm, 高仅 12.5mm)  
Ultra-thin and ultra-small (5 mm wide and 12.5 mm high)
  - 配有多种插座可供选择  
With a variety of sockets to choose from
- 环保产品 (符合 ROHS)  
Environmentally friendly products (in line with ROHS)
- 触点和线圈间介质电压 3KV  
Dielectric Voltage 3KV Between Contact and Coil
- UL 绝缘等级: F 级绝缘等级可供选择  
UL Insulation Level: F Insulation Level is optional

● 安规认证 Safety Approval

触点参数/CONTACT DATA	
触点形式 Contact Form	A—一组常开 A-1 Form A
接触电阻 Contact Resistance	100mΩ Max (6VDC 1A)
触点材料 Contact Material	银合金 Ag Alloy
触点负载 (阻性) Contact Rating (Resistive)	5A~7A 250VAC/30VDC
最大切换电压 Max. Switching Voltage	250VAC/30VDC
最大切换电流 Max. Switching Current	7A
最大切换功率 Max. Switching Power	1750VA
最小负载 Minimum load	5VDC 10mA
机械寿命 Mechanical	2×10 <sup>7</sup> 次 2×10 <sup>7</sup> times
电气寿命 Electrical Life	1×10 <sup>5</sup> times 5A 250VAC/30VDC 5×10 <sup>4</sup> times 7A 250VAC/30VDC

线圈参数/COIL DATA	
额定线圈功率 (W) Rated Coil Power(W)	5VDC ~ 18VDC: 约 120mW 24VDC: 约 180mW

安规认证/SAFETY APPROVAL	
UL	5A 30VDC L/R=0ms 5A 250VAC cosφ=1
TUV	5A 30VDC L/R=0ms 5A 250VAC cosφ=1
CQC	5A 30VDC L/R=0ms 5A 250VAC cosφ=1

性能参数/GENERAL DATA		
绝缘电阻 Insulation Resistance	1000MΩ.500VDC	
介质耐压 Dielectric Strength	断开触点间 Between Open contacts	1000VAC 1min
	线圈与触点间 Between Coil and contacts	3000VAC 1min
动作时间 (额定电压下) Operate time (Under rated voltage)	≤10ms	
释放时间 (额定电压下) Release time (Under rated voltage)	≤5ms	
冲击 Shock Resistance	强度 Endurance	980m/S <sup>2</sup>
	稳定性 Misoperation	98m/S <sup>2</sup>
振动 Vibration Resistance	10~55HZ, 1.5mm双振幅 10~55HZ, 1.5mm double amplitude	
湿度 Humidity	5%~85%RH, +40°C	
温度范围 Temperature range	-40°C~+85°C	
重量 Weight	约3.0g about 3.0g	

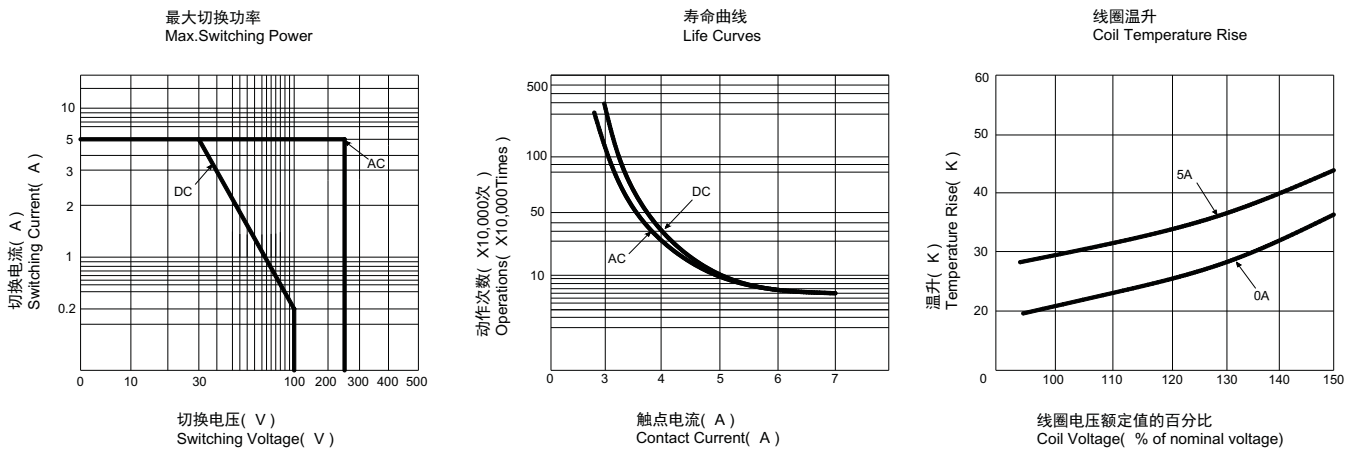
线圈规格表/Coil Specification Form				
额定电压 Rated Voltage (VDC)	吸合电压 Operate Voltage ≤ (VDC)	释放电压 Release Voltage ≥ (VDC)	最大电压 Maximum Voltage (VDC)	线圈电阻 Coil Resistance (Ω ±10%)
5	3.50	0.25	6.0	208
6	4.20	0.30	7.2	300
9	6.30	0.45	10.8	675
12	8.40	0.60	14.4	1200
18	12.6	0.90	21.6	2700
24	16.8	1.20	28.8	3200

命名规则/OPDERING INFORMATION

CTPR6 -S -D12V -1 -L -A -H (xxx)

客户特性号 : Customer characteristic No:		
安装方式 : Installation mode :	H : 水平安装 H : Horizontal installation	无: 垂直安装 Blank: Vertical installation
触点转换形式 : Contact Forms :	A- 一组常开 A- 1 Form A	
额定线圈功率 : Rated Coil Power:	L标准型-0.18W LStandard form-0.18W	无-0.18W Blank-0.18W
引出脚间距 : Leading foot spacing :	1:5.08mm 1:5.08mm	2:7.62mm 2:7.62mm
额定线圈电压 (VDC) : Rated Coil Voltage (VDC) :	05, 06, 09, 12, 18, 24 05, 06, 09, 12, 18, 24	
封装形式 : Packing Forms:	S-塑封型 S-Plastic Sealed Type	SH-防焊剂型 SH-Flux Model
型号 : CTPR6 Model: CTPR6		

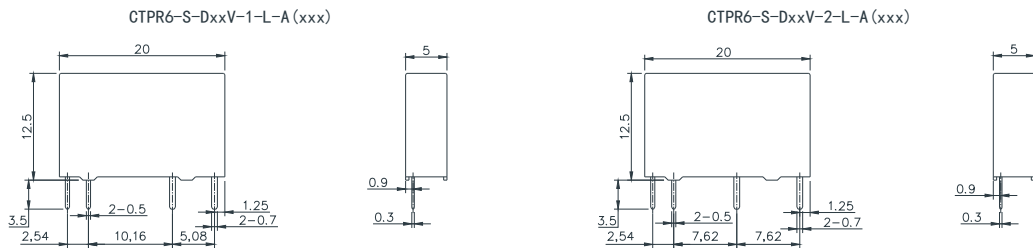
特性曲线图/CHARACTERISTIC CHART DATA



外形图、接线图、安装孔尺寸(单位:mm) / OUTLINE DIMENSIONS, WIRING DIAGRAM, PCB LAYOUT(UNIT:mm)

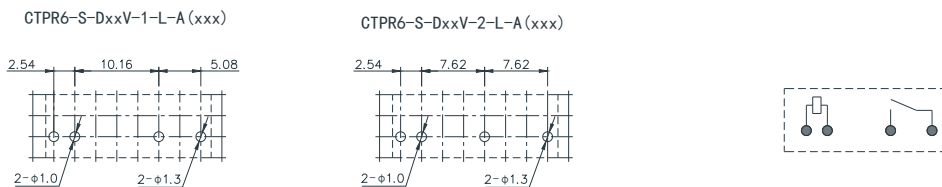
垂直安装型  
Vertical mounting type

外形图/Outline Dimensions



安装孔尺寸/PCB Layout  
(底视图) / (Bottom View)

接线图/Wiring Diagram  
(底视图) / (Bottom View)



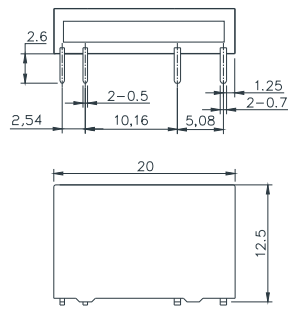
# RELAY

## 水平安装型

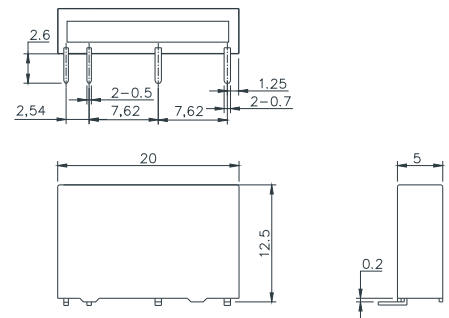
Horizontal mounting type

### 外形图/Outline Dimensions

CTPR6-S-DxxV-1-L-A-H(xxx)

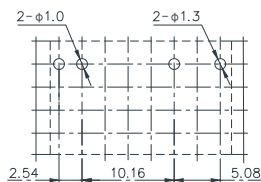


CTPR6-S-DxxV-2-L-A-H(1)

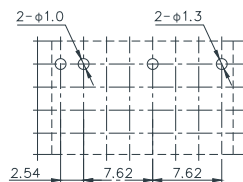


安装孔尺寸/PCB Layout  
(底视图) (Bottom View)

CTPR6-S-DxxV-1-L-A-H(1)



CTPR6-S-DxxV-2-L-A-H(1)



接线图/Wiring Diagram  
(底视图) (Bottom View)



- 备注：(1)产品部分外形尺寸未注尺寸公差，当外形尺寸 $\leq 1\text{mm}$ ，公差为 $\pm 0.2\text{mm}$ ；当外形尺寸在 $(1\sim 5)\text{mm}$ 之间时，公差为 $\pm 0.3\text{mm}$ ；当外形尺寸 $> 5\text{mm}$ ，公差为 $\pm 0.4\text{mm}$ ；  
(2)安装孔尺寸中央未注尺寸公差为 $\pm 0.1\text{mm}$ ；  
(3)网格宽度为 $2.54\text{mm}$ 。

- Remarks: (1)The dimension tolerance of part of the product is uninhabited, when the dimension of the product is less than 1 mm, the tolerance is ( $\pm 0.2\text{ mm}$ ); when the dimension of the product is between (1~5) mm, the tolerance is ( $\pm 0.3\text{ mm}$ ); when the dimension of the product is different, the tolerance is ( $\pm 0.3\text{ mm}$ ). > 5mm, tolerance is < 0.4mm;  
(2) The dimension tolerance of the installation hole without central injection is ( $\pm 0.1\text{ mm}$ );  
(3) The width of the mesh is 2.54 mm.

### 声明：

本产品规格书仅供客户使用时参考，若有更改，恕不另行通知。  
对本公司而言，不可能评定继电器在每一个具体领域的所有性能参数要求，因而客户应根据具体的使用条件选择与之相配的产品，若有疑问，请与云尖联系以便获取更多的技术支持，但选型责任仅由客户负责。

Disclaimer: The specification is for reference only. Specifications subject to change without notice. We could not evaluate all the performance and all the parameters for every possible application. Thus the user should be in a right position to choose the suitable product for their own application. If there is any query, please contact "Cloutip" for the technical service. However, it is the use's responsibility to determine which product should be used only.